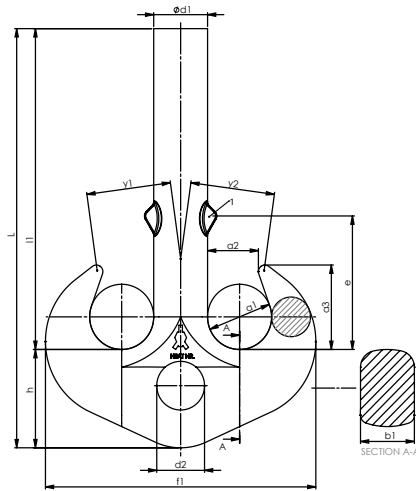


# Double Hook with shackle hole

form B



Hook No.	Lifting Capacity US tons V-Class Hook	Lifting Capacity Metric tons V-Class Hook	Lifting Capacity US tons T-Class Hook	Lifting Capacity Metric tons T-Class Hook	Lifting Capacity US tons P-Class Hook	Lifting Capacity Metric tons P-Class Hook	Dimensions (inch)										Weight (kg)	Weight (lbs)		
							a1	a2	a3	b1	d1	d2 (H15)	e	f1	h	L			l1	y1 = y2
8	44	40	35,2	32	22	20	3.15	2.48	4.06	2.64	2.64	2.91	7.17	13.27	4.72	21.06	16.34	4.11	30	66
10	55	50	44	40	27.5	25	3.54	2.80	4.57	2.95	2.95	2.91	7.56	14.84	5.12	22.83	17.72	4.63	41	90
12	69.3	63	55	50	35.2	32	3.94	3.15	5.12	3.35	3.35	3.07	8.27	16.57	5.91	25.98	20.08	5.22	57	126
16	88	80	69.3	63	44	40	4.41	3.54	5.75	3.74	3.74	3.39	9.33	18.54	6.69	29.53	22.83	5.85	82	181
20	110	100	88	80	55	50	4.92	3.94	6.42	4.17	4.17	3.78	10.43	20.91	7.48	33.07	25.59	6.52	115	254
25	137.5	125	110	100	69.3	63	5.51	4.41	7.17	4.65	4.65	4.17	12.40	23.54	8.35	36.50	28.15	7.28	160	353
32	176	160	137.5	125	88	80	6.30	4.92	8.07	5.20	5.20	4.57	13.19	26.46	9.29	40.39	31.10	8.15	229	505
40	220	200	176	160	110	100	7.09	5.51	9.06	5.91	5.91	5.16	14.76	29.69	10.43	45.28	34.84	9.17	330	728
50	275	250	220	200	137.5	125	7.87	6.30	10.24	6.69	6.69	5.75	16.54	33.15	11.81	49.80	37.99	10.43	458	1010
63	352	320	275	250	176	160	8.82	7.09	11.50	7.48	7.48	6.61	18.11	37.17	13.19	56.10	42.91	11.69	638	1407
80	440	400	352	320	220	200	9.84	7.87	12.80	8.35	8.35	7.40	20.28	41.81	14.76	63.39	48.62	13.03	892	1967
100	550	500	440	400	275	250	11.02	8.82	14.33	9.29	9.29	8.19	22.64	46.69	16.73	70.87	54.13	14.57	1248	2751
125	693	630	550	500	352	320	12.40	9.84	16.06	10.43	10.43	9.25	25.39	52.36	18.70	79.72	61.02	16.32	1757	3874
160	880	800	693	630	440	400	13.98	11.02	18.03	11.81	11.81	10.24	28.54	59.25	20.87	89.57	68.70	18.35	2500	5512
200	1100	1000	880	800	550	500	15.75	12.40	20.28	13.19	13.19	11.10	31.50	66.34	23.62	100.79	77.17	20.57	3560	7848
250	1375	1250	1100	1000	693	630	17.72	13.98	22.83	14.76	14.76	12.28	34.45	74.21	26.38	113.39	87.01	23.13	5033	11096

- Hooks shown here are standard models; inquiries for custom versions are welcome.
- Lifting capacity determined according to crane group 1Bm as specified in DIN 15400.



**SEE OUR WARNINGS AND APPLICATION INSTRUCTIONS**

