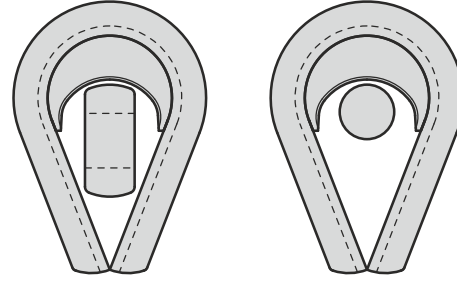


# HIGH STRENGTH THIMBLE

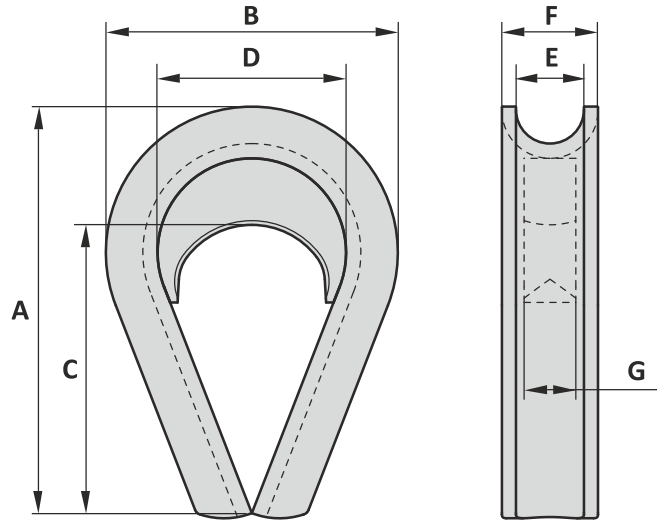
# TYPE K2-C

Material : Mild steel  
 Safety factor : ≤ 85 ton 6 times  
                   : > 85 ton 5 times  
 Finish : Painted  
 Temperature range : -20°C up to +200°C  
 Standard certification : Certificate of Conformity

Suitable for Dyneema rope and wire rope  
 Non-standard sizes or custom products available on request



Designed to fit shackle bow and shackle pin



Can be assembled with our range of shackles, SC1 and SC5 links and HK2 hooks on request

Art. No.	WLL ton	MBL ton	Rope mm	A inch	B inch	C inch	D inch	E inch	F inch	G inch	Weight lbs
11128888	42.5	255	44-48	12	9 <sup>3</sup> / <sub>32</sub>	8 <sup>1</sup> / <sub>4</sub>	5 <sup>23</sup> / <sub>32</sub>	2 <sup>1</sup> / <sub>16</sub>	2 <sup>9</sup> / <sub>16</sub>	1 <sup>1</sup> / <sub>16</sub>	20
11148888	55	330	52-56	14	10 <sup>1</sup> / <sub>4</sub>	9 <sup>2</sup> / <sub>32</sub>	6 <sup>3</sup> / <sub>32</sub>	2 <sup>3</sup> / <sub>16</sub>	2 <sup>7</sup> / <sub>32</sub>	1 <sup>1</sup> / <sub>16</sub>	24
11178888	85	510	60-64	17	12 <sup>3</sup> / <sub>16</sub>	12 <sup>1</sup> / <sub>32</sub>	7 <sup>15</sup> / <sub>32</sub>	2 <sup>3</sup> / <sub>4</sub>	3 <sup>1</sup> / <sub>16</sub>	1 <sup>3</sup> / <sub>32</sub>	51
11198888	120	600	68-76	19	13 <sup>25</sup> / <sub>32</sub>	13 <sup>25</sup> / <sub>32</sub>	9 <sup>1</sup> / <sub>16</sub>	3 <sup>3</sup> / <sub>16</sub>	4 <sup>1</sup> / <sub>16</sub>	2 <sup>3</sup> / <sub>16</sub>	82
11228888	150	750	80-89	22	15 <sup>1</sup> / <sub>16</sub>	15 <sup>1</sup> / <sub>32</sub>	10 <sup>1</sup> / <sub>32</sub>	3 <sup>5</sup> / <sub>8</sub>	5 <sup>1</sup> / <sub>16</sub>	2 <sup>3</sup> / <sub>4</sub>	110
11248888	200	1000	92-102	24	16 <sup>15</sup> / <sub>16</sub>	17 <sup>3</sup> / <sub>16</sub>	11 <sup>1</sup> / <sub>32</sub>	4 <sup>1</sup> / <sub>8</sub>	5 <sup>23</sup> / <sub>32</sub>	3 <sup>1</sup> / <sub>32</sub>	143
11268888	250	1250	104-114	26	17 <sup>23</sup> / <sub>32</sub>	18 <sup>1</sup> / <sub>2</sub>	11 <sup>1</sup> / <sub>32</sub>	4 <sup>23</sup> / <sub>32</sub>	6 <sup>1</sup> / <sub>32</sub>	3 <sup>1</sup> / <sub>16</sub>	168

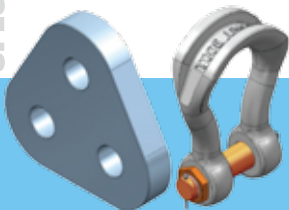
Tolerance: Forged parts ± 5%

# GN ROPE FITTINGS

North American Stocking Distributor

8125 Saran Dr. • Playa del Rey, CA 90293  
 Phone: 310.448.5444 • Fax: 310.448.5446  
 sales@awrrinc.com  
 www.AssociatedWireRope.com

**Associated**  
 WIRE ROPE & RIGGING

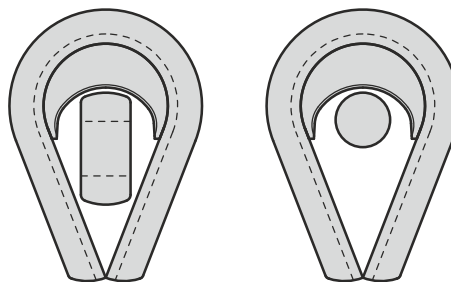


# HIGH STRENGTH THIMBLE

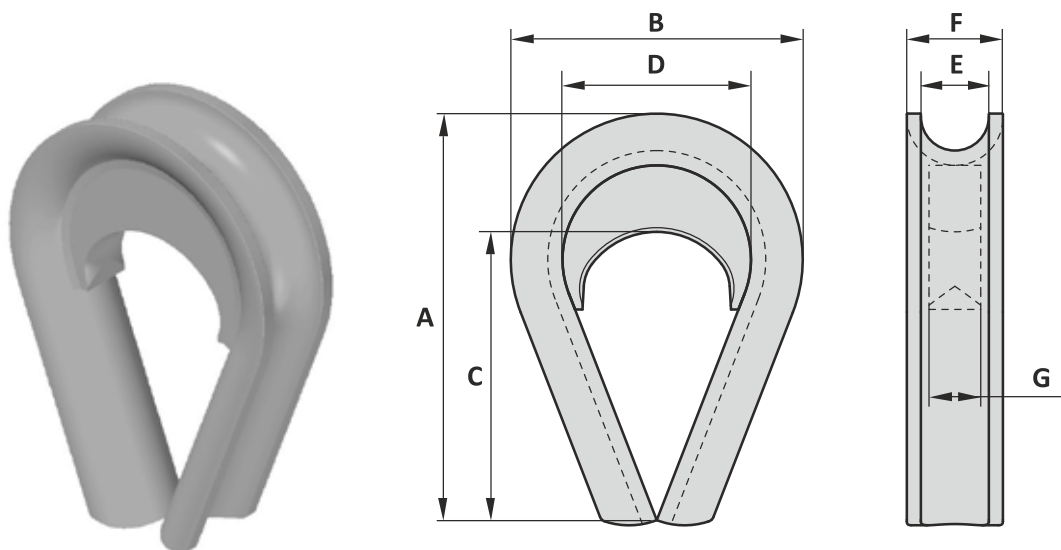
# TYPE K2-C

Material : Mild steel/high tensile steel  
 Safety factor : ≤ 85 ton 6 times  
                   : > 85 ton 5 times  
 Finish : Painted  
 Temperature range : -20°C up to +200°C  
 Standard certification : Certificate of Conformity

Suitable for Dyneema rope and wire rope  
 Non-standard sizes or custom products available on request



Designed to fit shackle bow and shackle pin



Can be assembled with our range of shackles, SC1 and SC5 links and HK2 hooks on request

Art. No.	WLL ton	MBL ton	Rope mm	A inch	B mm	C mm	D mm	E mm	F mm	G mm	Weight kg
11128888	42.5	255	44-48	12	245	210	145	52	65	40	9.2
11148888	55	330	52-56	14	260	245	155	60	72	40	11
11178888	85	510	60-64	17	310	320	190	70	84	50	23
11198888	120	600	68-76	19	350	350	230	81	119	60	37
11228888	150	750	80-89	22	395	390	255	92	130	70	50
11248888	200	1000	92-102	24	430	440	280	105	145	80	65
11268888	250	1250	104-114	26	450	470	285	120	155	90	76

Tolerance: Forged parts ± 5%

# GN ROPE FITTINGS

North American Stocking Distributor

8125 Saran Dr. • Playa del Rey, CA 90293

Phone: 310.448.5444 • Fax: 310.448.5446

sales@awrrinc.com

www.AssociatedWireRope.com

