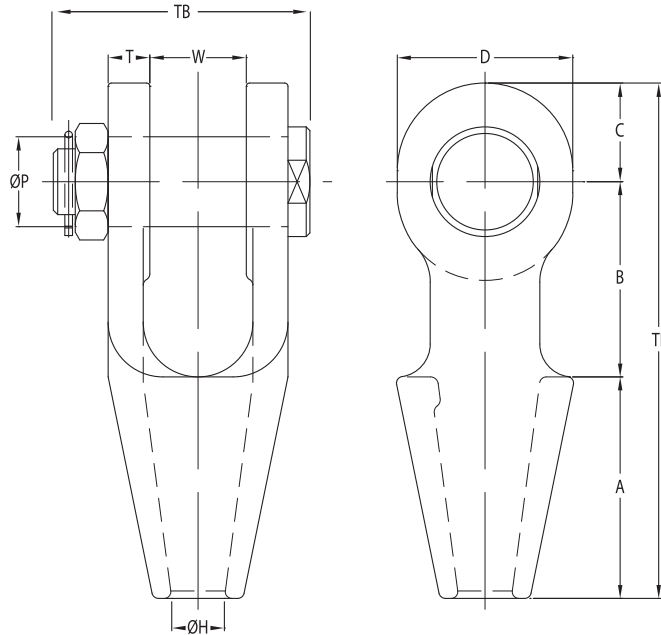
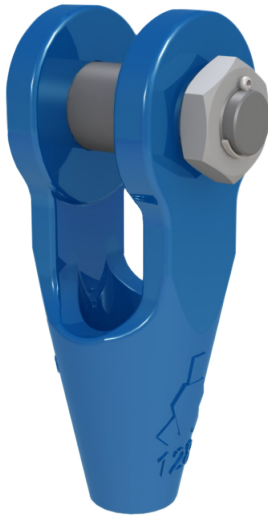


OPEN SPELTER SOCKETS JIS WITH BOLT

QUENCHED AND  
TEMPERED CAST STEEL



Model No.	MBL (UStons)	for wire ø		Dimensions (inch)										Weight (lbs)
		(mm)	(inch)	A	B	C	D	øH	øP	T	TL	TB	W	
OSS 100-J20-B30	31	18-19	¾	3.50	2.99	1.57	2.76	0.83	1.18	0.63	8.07	4.21	1.50	6.6
OSS 104-J22-B34	39	20-22,4	7/8	3.98	3.50	1.77	3.15	0.94	1.34	0.75	9.25	4.84	1.73	9.7
OSS 108-J24-B37	45	23-26	1	4.49	3.98	2.36	4.09	1.10	1.46	0.87	10.83	5.43	2.01	18
OSS 108-J25-B40	57	23-26	1	4.49	3.98	2.36	4.09	1.10	1.57	0.87	10.83	5.43	2.01	18
OSS 111-J28-B43	62	27-30	1 1/8	5.00	4.49	2.56	4.49	1.26	1.69	0.98	12.05	6.30	2.24	25
OSS 111-J30-B46	76	27-30	1 1/8	5.00	4.49	2.56	4.49	1.26	1.81	0.98	12.05	6.30	2.24	25.6
OSS 115-J32-B48	76	31-36	1 1/4 - 1 3/8	5.47	5.00	2.83	4.96	1.50	1.89	1.10	13.31	6.85	2.48	33
OSS 115-J34-B52	97	31-36	1 1/4 - 1 3/8	5.47	5.00	2.83	4.96	1.50	2.05	1.10	13.31	6.85	2.48	33.5
OSS 118-J36-B56	104	35,5-39	1 1/2	5.98	6.38	3.15	5.59	1.61	2.20	1.18	15.51	7.91	2.99	48.5

MBL = Minimum Breaking Load

- The standard finish of the sockets is blue primer coating and hot dipped galvanized.
- All sockets are provided with an EN 10204-2.1 declaration of conformity and EN 10204-3.1 material certificate.
- Dimensional tolerances are ±5% for the jaw opening (W) and pin diameter (øP).
- For other dimensional tolerances please contact Ropeblock.
- Surface finish e.g. hot dip galvanizing or paint may add to the overall thickness and fork distance.

 **SEE OUR WARNING & SAFETY INFORMATION ON PAGES 136 - 148**

